

THE LONG NOW PROJECT DRAWING SET FEBRUARY 2015 10 Total Sheets

ALL DESIGNS AND DRAWINGS CREATED BY:
SCOTT SWAALEY AND THE 2014/2015
SWAALEY/STRONG TEACHING TEAM

CONTACT AT:
SSWAALEY@HIGHTECHHIGH.ORG
(805) 878-1808



(DRAFT RENDERING)

PARTS LIST

ITEM	QTY	PART NUMBER	DESCRIPTION
12	1	WEAR PLATE	WEAR PLATE FOR BEARING ATTACHMENT
18	1	RAILING ASSEMBLY	
28	1	CUBE BASE	SECURES OUTER PIPE
29	1	CUBE BASE COVER	SHEET METAL COVER FOR CUBE BASE
42	1	FLY PEND ARM	
45	1	UPPER SUPPORT ARM	SUPPPORTS INNER PIPE FROM 2ND STORY.
59	1	INNER PIPE	CONCENTRICALLY ROTATING PIPE
62	1	OUTER PIPE	THE STATIONARY SUPPORT

TABLE OF CONTENTS

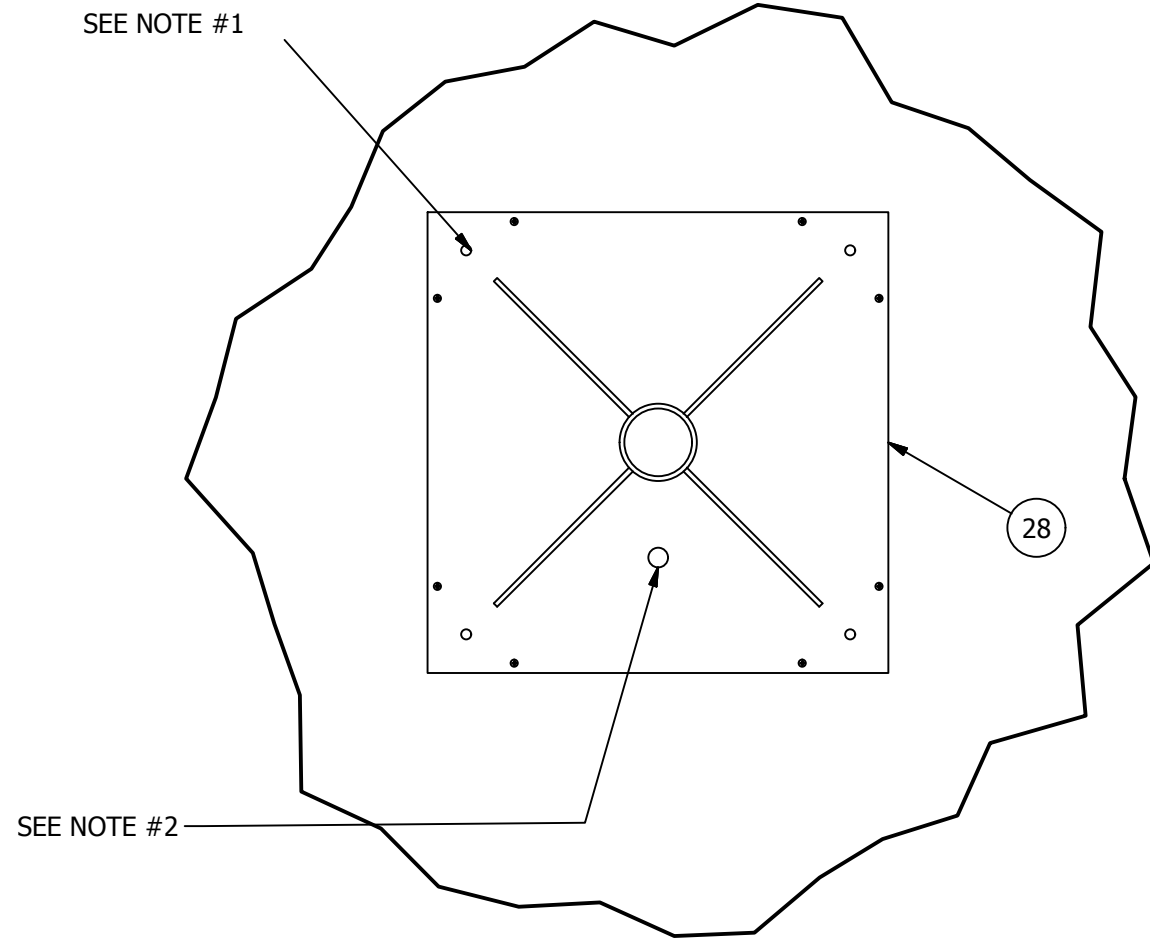
SHEET #	DESCRIPTION	CONTENTS
1	TITLE PAGE	OVERVIEW - ALL PARTS
2	OVERALL PLAN VIEW	OVERVIEW - ALL PARTS
3	OVERALL ISO VIEW	OVERVIEW - ALL PARTS
4	OVERALL SECTION VIEW	OVERVIEW - ALL PARTS
5	CUBE BASE & COVER	PARTS: 28,29
6	INNER & OUTER PIPE	PARTS: 59,62
7	UPPER SUPPORT ARM	PARTS: 45
8	FLYING PENDULUM ARM	PARTS: 42
9	WEAR PLATE	PARTS: 12
10	RAILING LAYOUT & DETAIL	PARTS: 18

General Notes

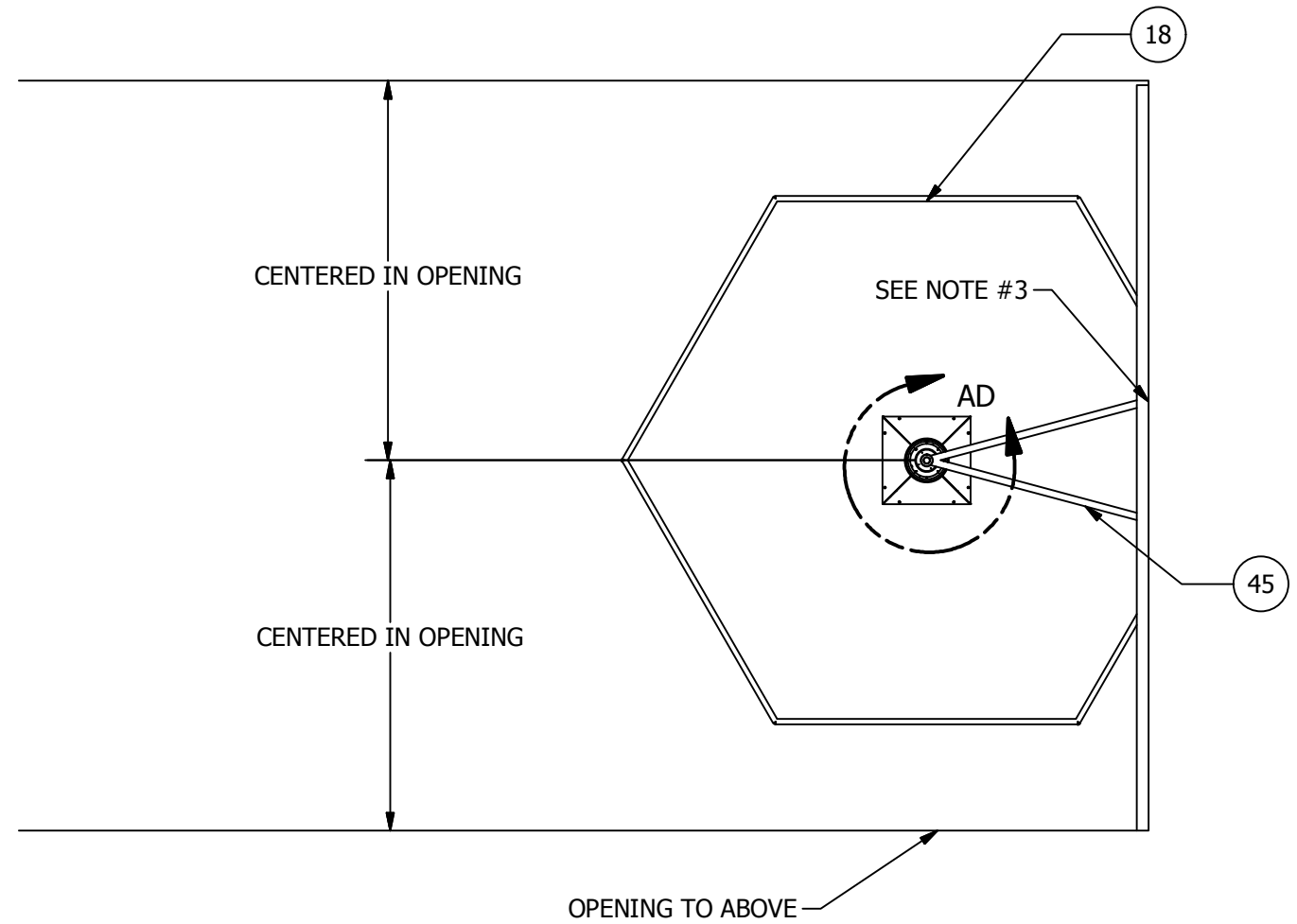
#1 Although many of the parts in this drawing set are drawn as solid parts, many require welded joints. For simplicity, weldments are not shown.

#2 All units are shown in inches.

DRAWING #2 - OVERALL PLAN VIEW



DETAIL AD
SCALE 1 / 10

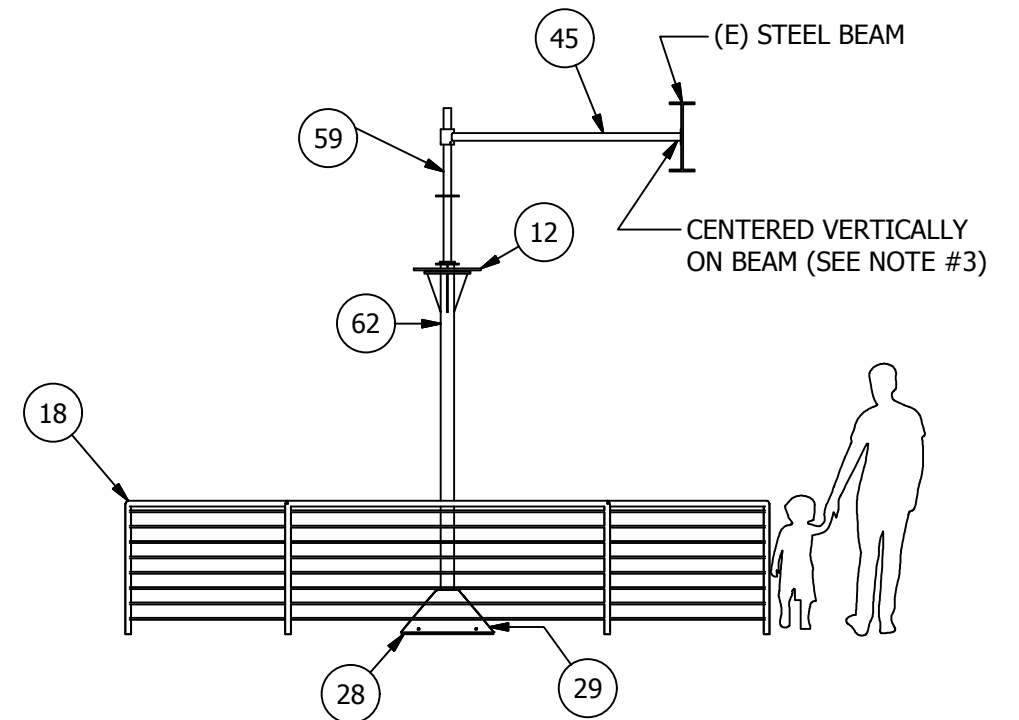


Notes

#1 Provide suitable 1/2" concrete anchors or 1/2" threaded rod through slab (TYP OF 4).

#2 Use existing hole to route EMT conduit from below slab. Provide duplex receptacle. Ensure EMT and receptacle do not interfere with base cover.

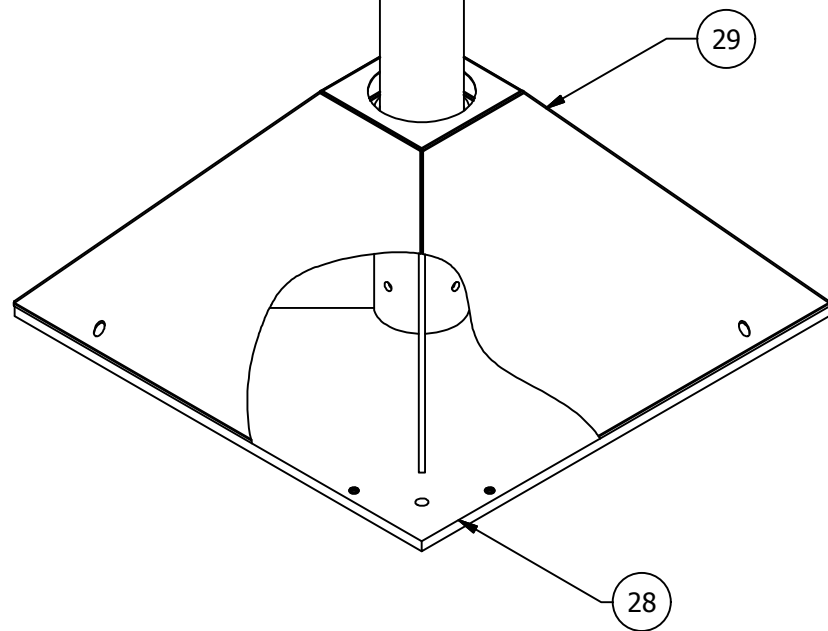
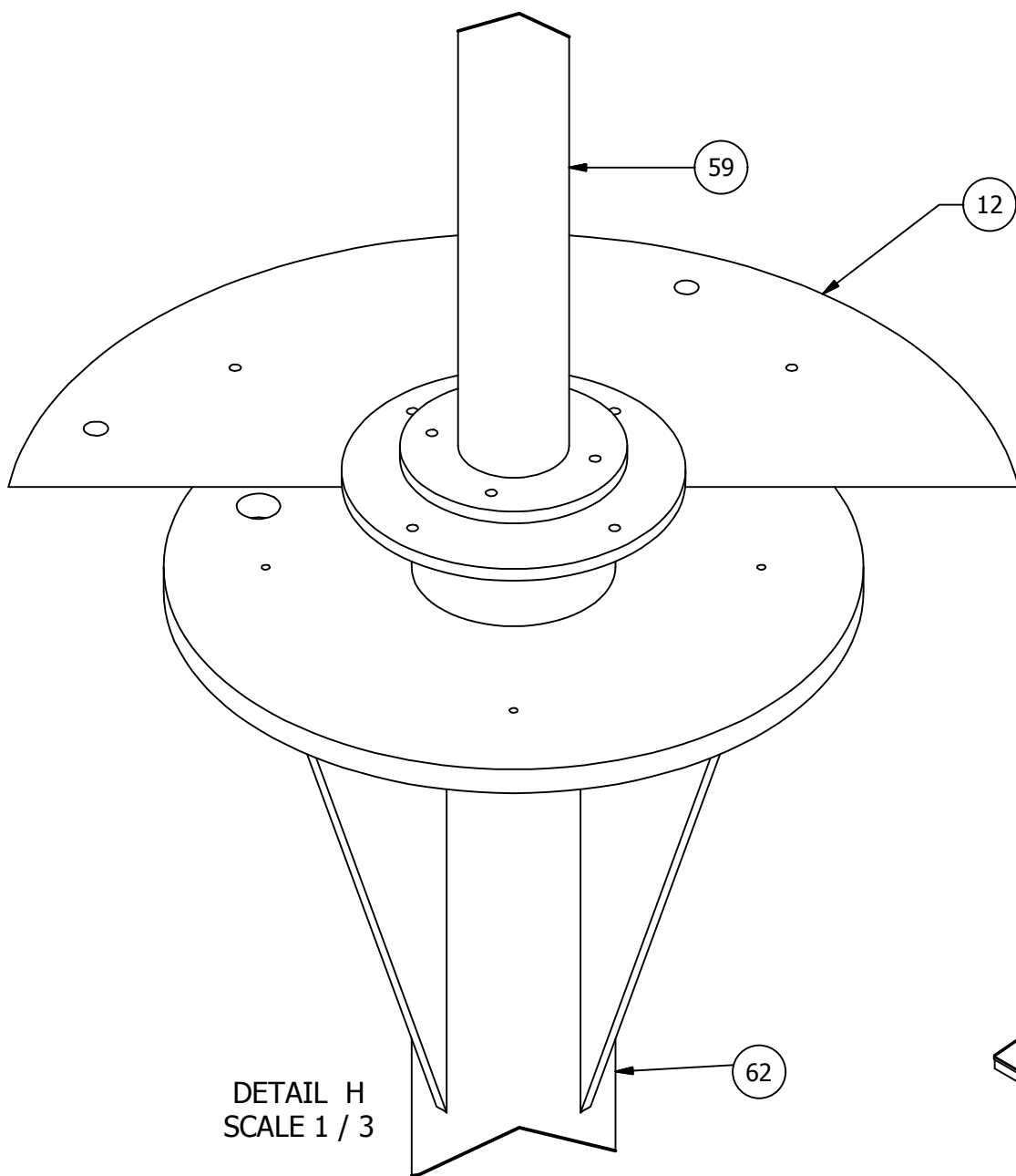
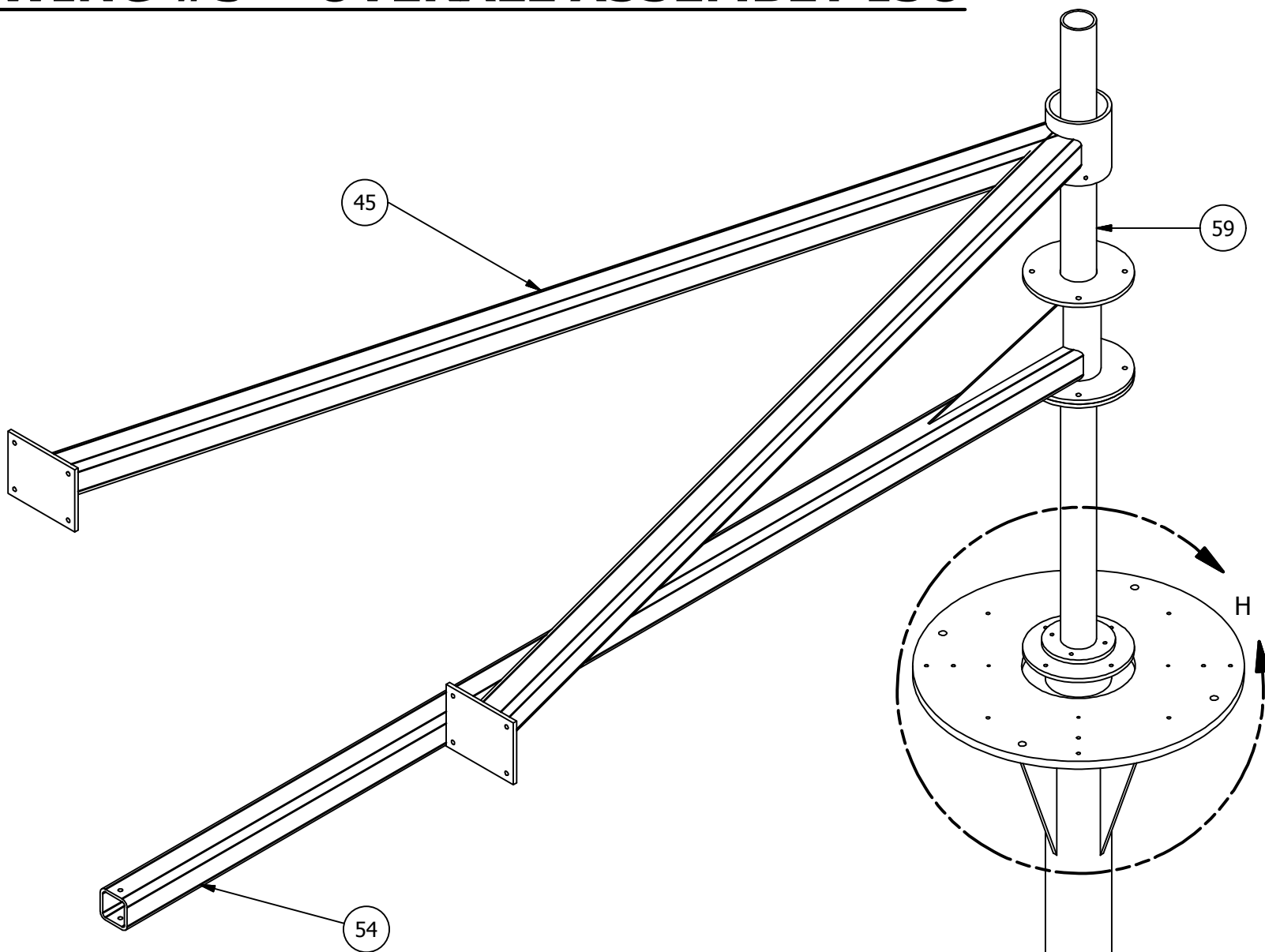
#3 Bolt flanges of upper support arm to existing structural beam.



PRODUCED BY AN AUTODESK EDUCATIONAL PRODUCT

PRODUCED BY AN AUTODESK EDUCATIONAL PRODUCT

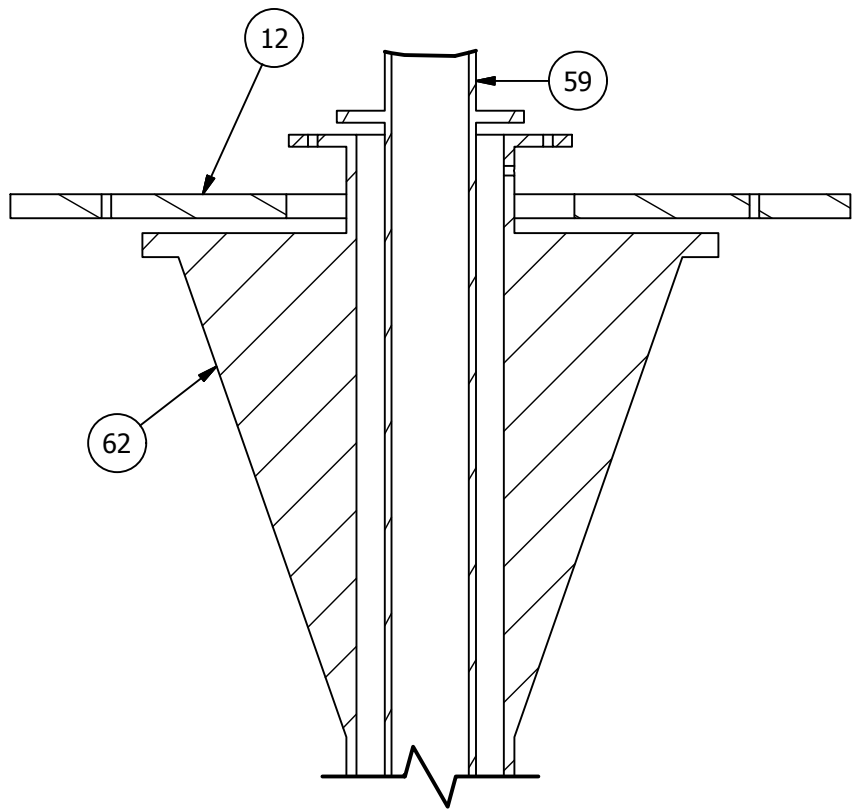
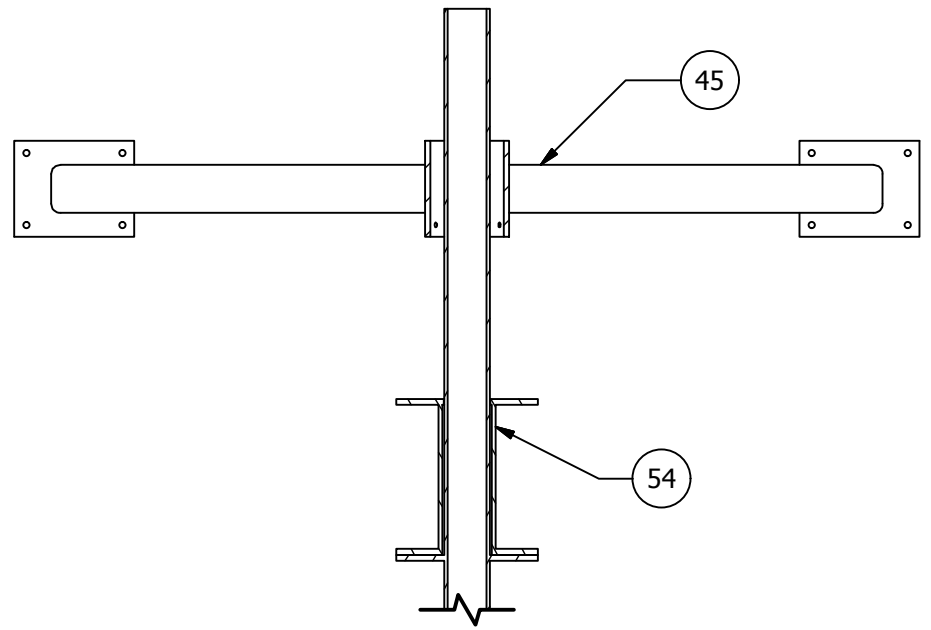
DRAWING #3 - OVERALL ASSEMBLY ISO



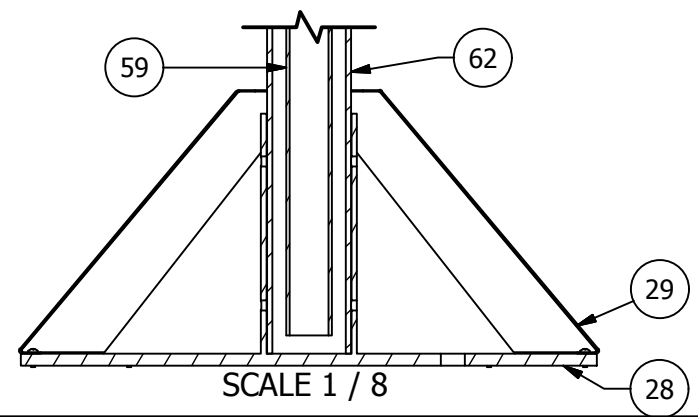
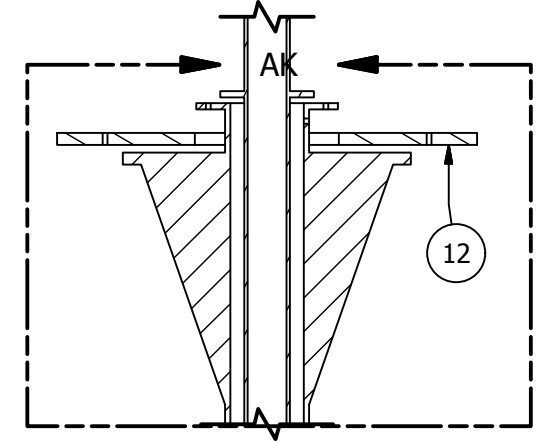
PRODUCED BY AN AUTODESK EDUCATIONAL PRODUCT

PRODUCED BY AN AUTODESK EDUCATIONAL PRODUCT

DRAWING #4 - OVERALL ASSEMBLY SECTION



DETAIL AK
SCALE 1 / 4



SCALE 1 / 8

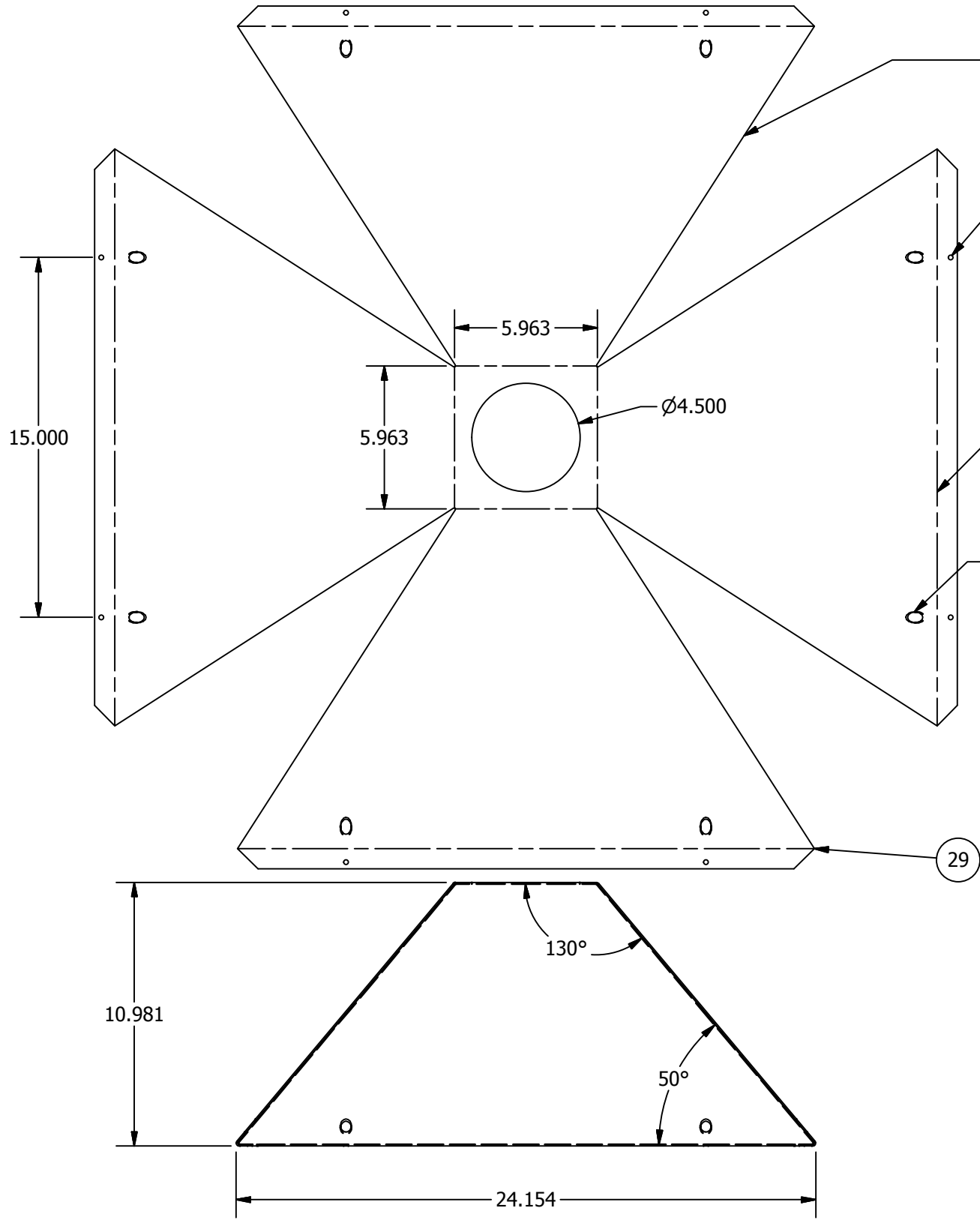
PRODUCED BY AN AUTODESK EDUCATIONAL PRODUCT

PRODUCED BY AN AUTODESK EDUCATIONAL PRODUCT

DRAWING #5 - BASE & COVER

2

1



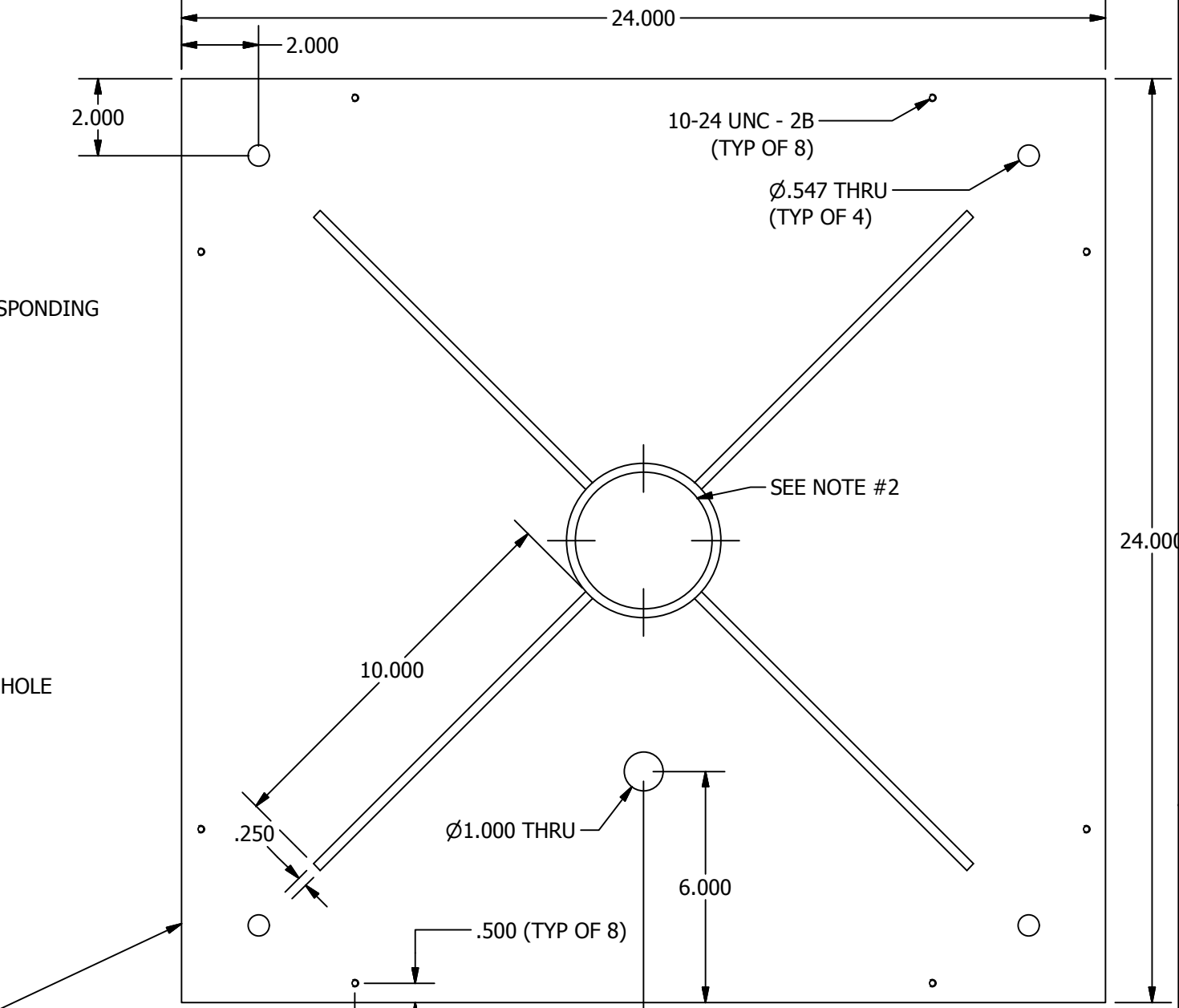
SEE NOTE #1

Ø.201 THRU
LINE-UP WITH CORRESPONDING
HOLES ON BASE
(TYP. OF 8)

BEND LINE

SCREWDRIVER CLEARANCE HOLE
(TYP OF 8)

29



10-24 UNC - 2B
(TYP OF 8)

Ø.547 THRU
(TYP OF 4)

SEE NOTE #2

Ø1.000 THRU

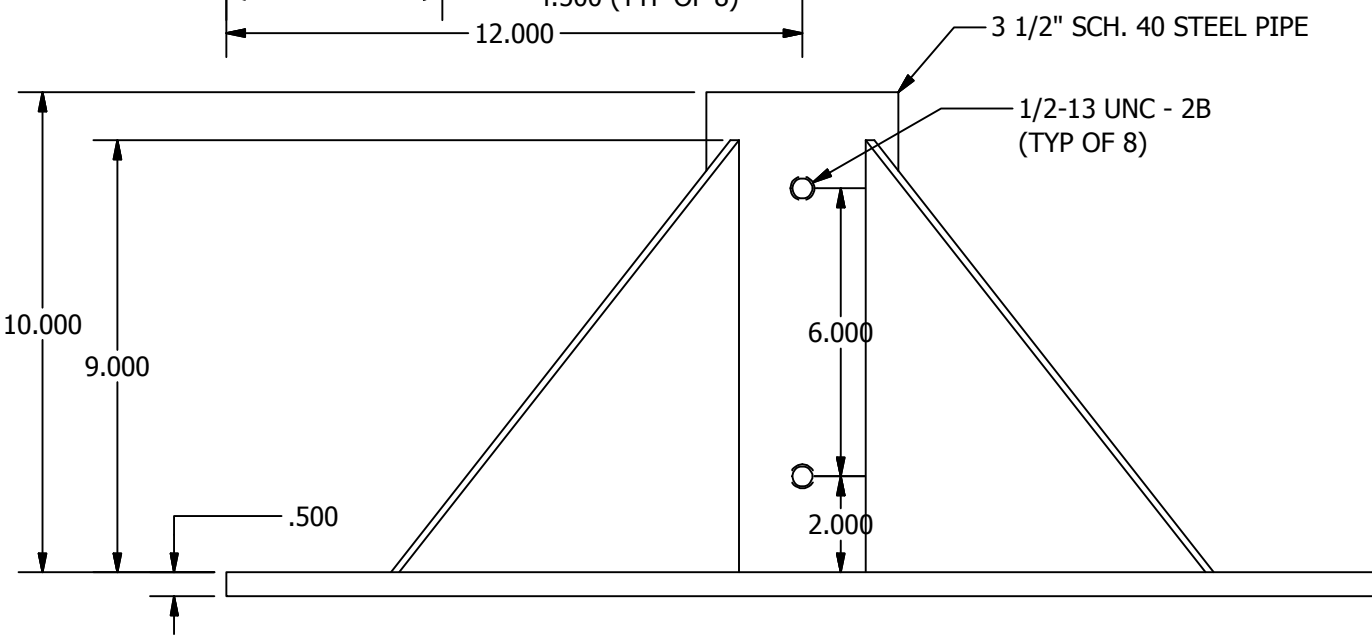
.500 (TYP OF 8)

4.500 (TYP OF 8)

12.000

28

Notes
 #1 Flattened sheet metal layout is indicative. Use dimensioned drawings to determine best cut/bend pattern.
 #2 Ensure that pipe tolerances allow Outer Pipe to be inserted in base.



3 1/2" SCH. 40 STEEL PIPE

1/2-13 UNC - 2B
(TYP OF 8)

10.000

9.000

.500

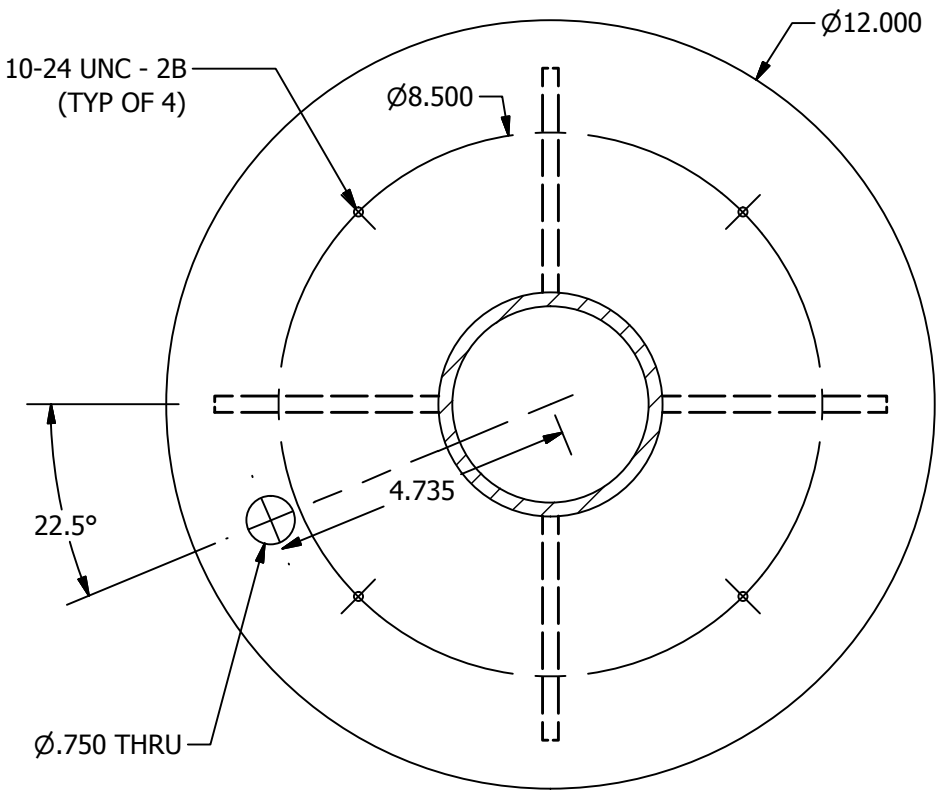
6.000

2.000

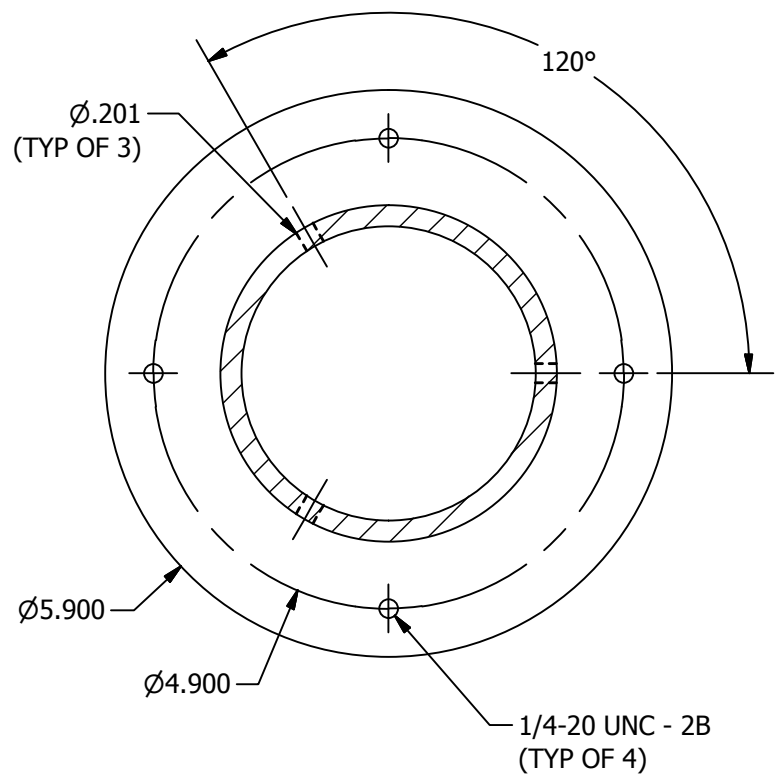
2

1

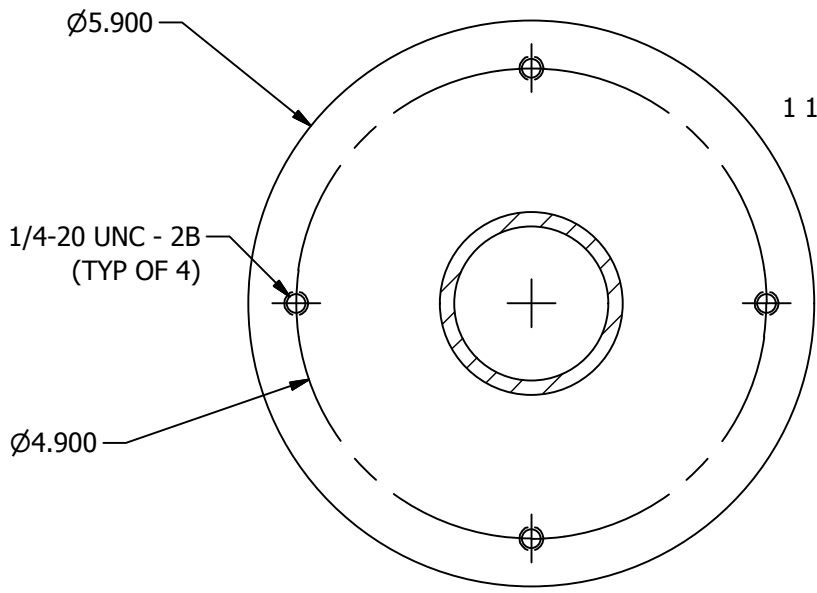
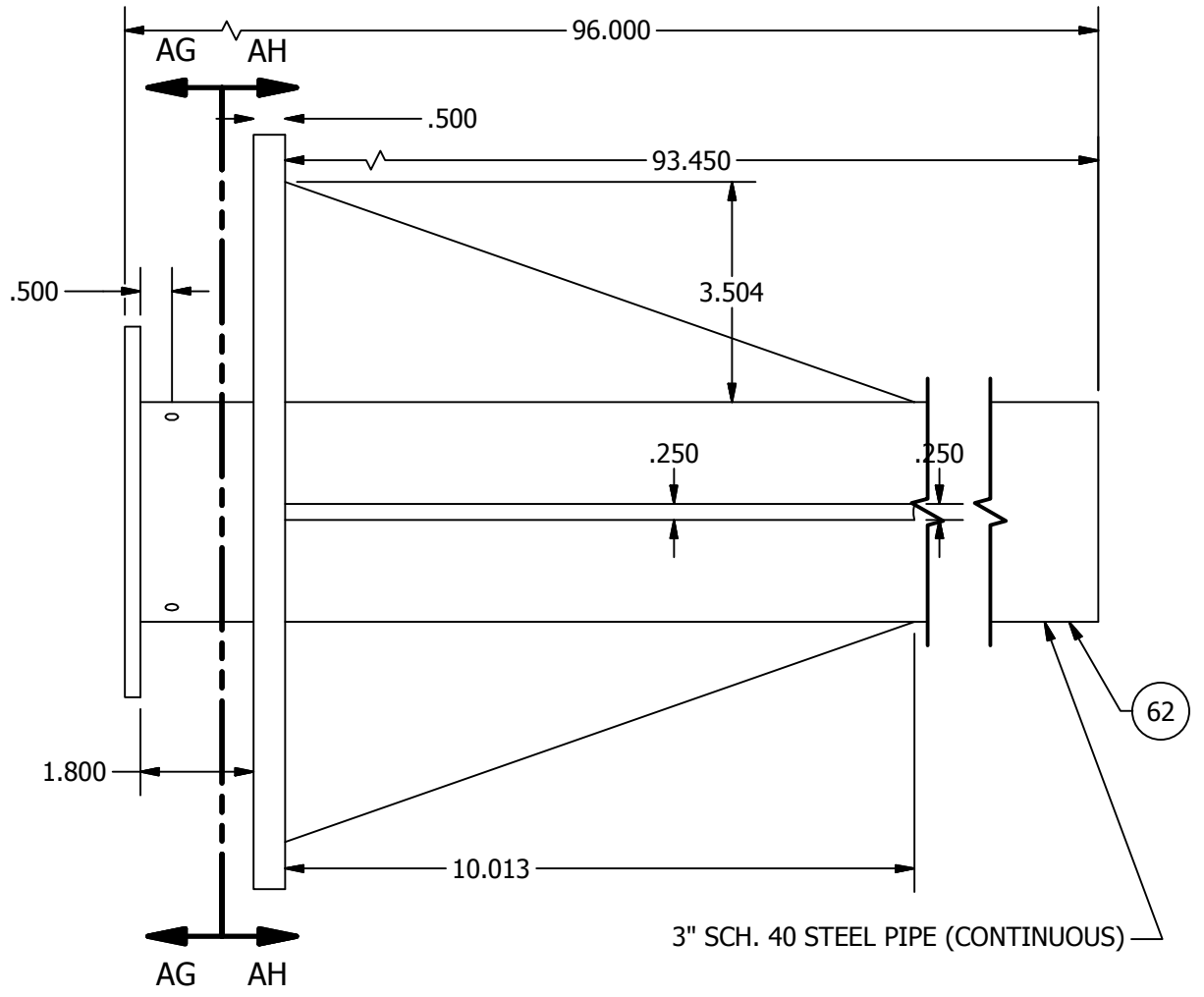
DRAWING #6 - INNER & OUTER PIPE



SECTION AH-AH
SCALE 1 / 3

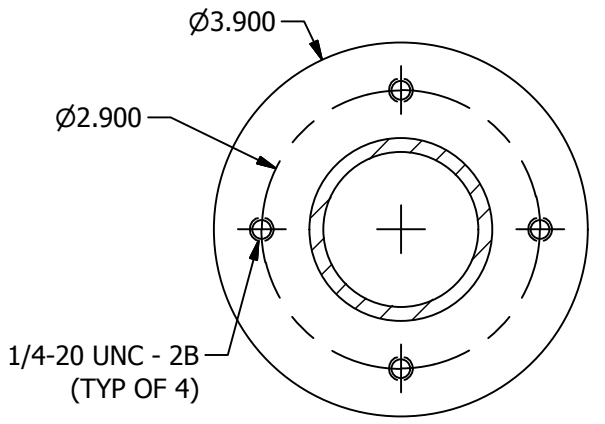
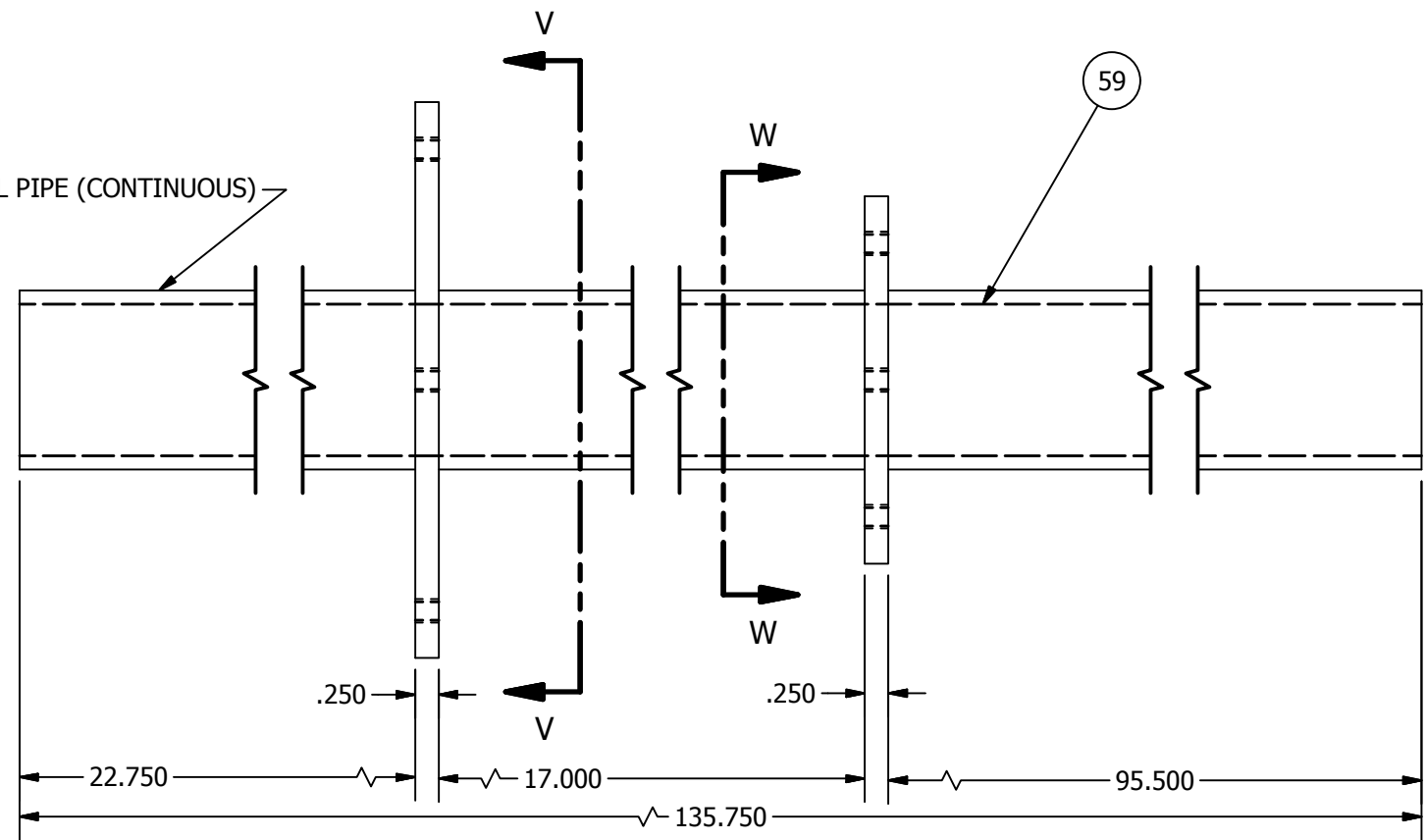


SECTION AG-AG
SCALE 1 / 2



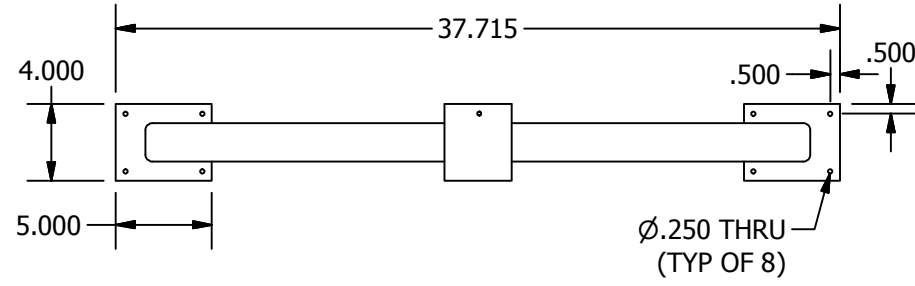
SECTION V-V
SCALE 1 / 2

1 1/2" SCH. 40 STEEL PIPE (CONTINUOUS)

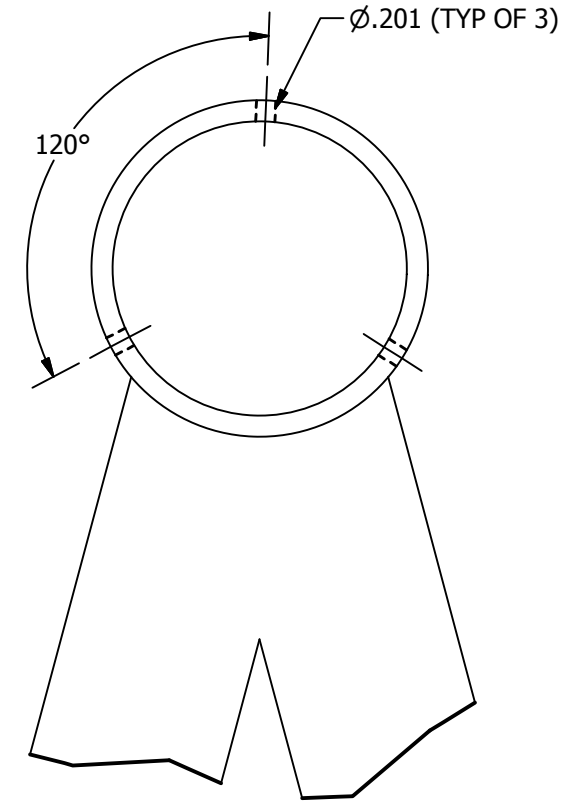
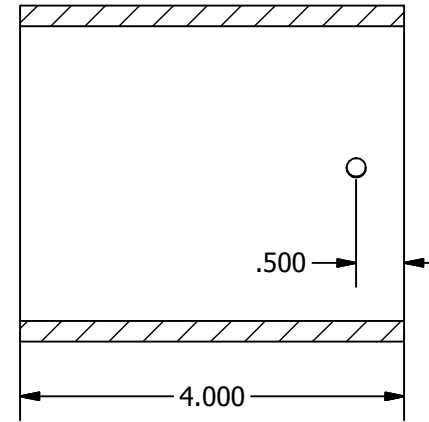


SECTION W-W
SCALE 1 / 2

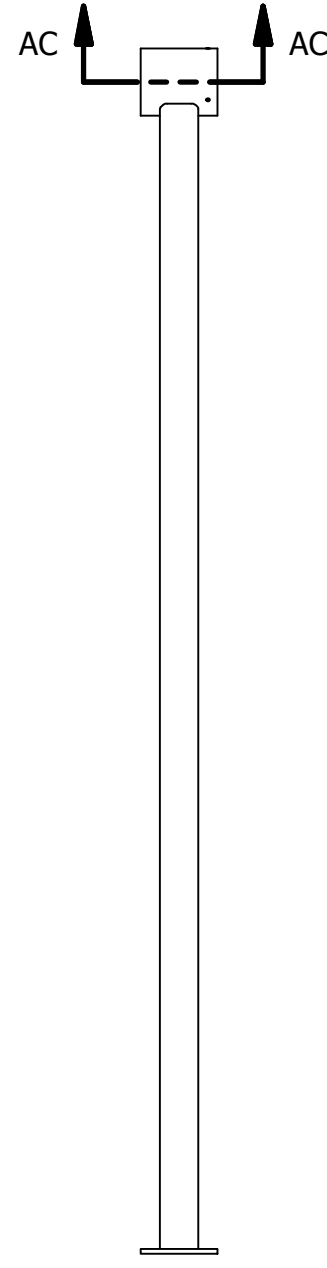
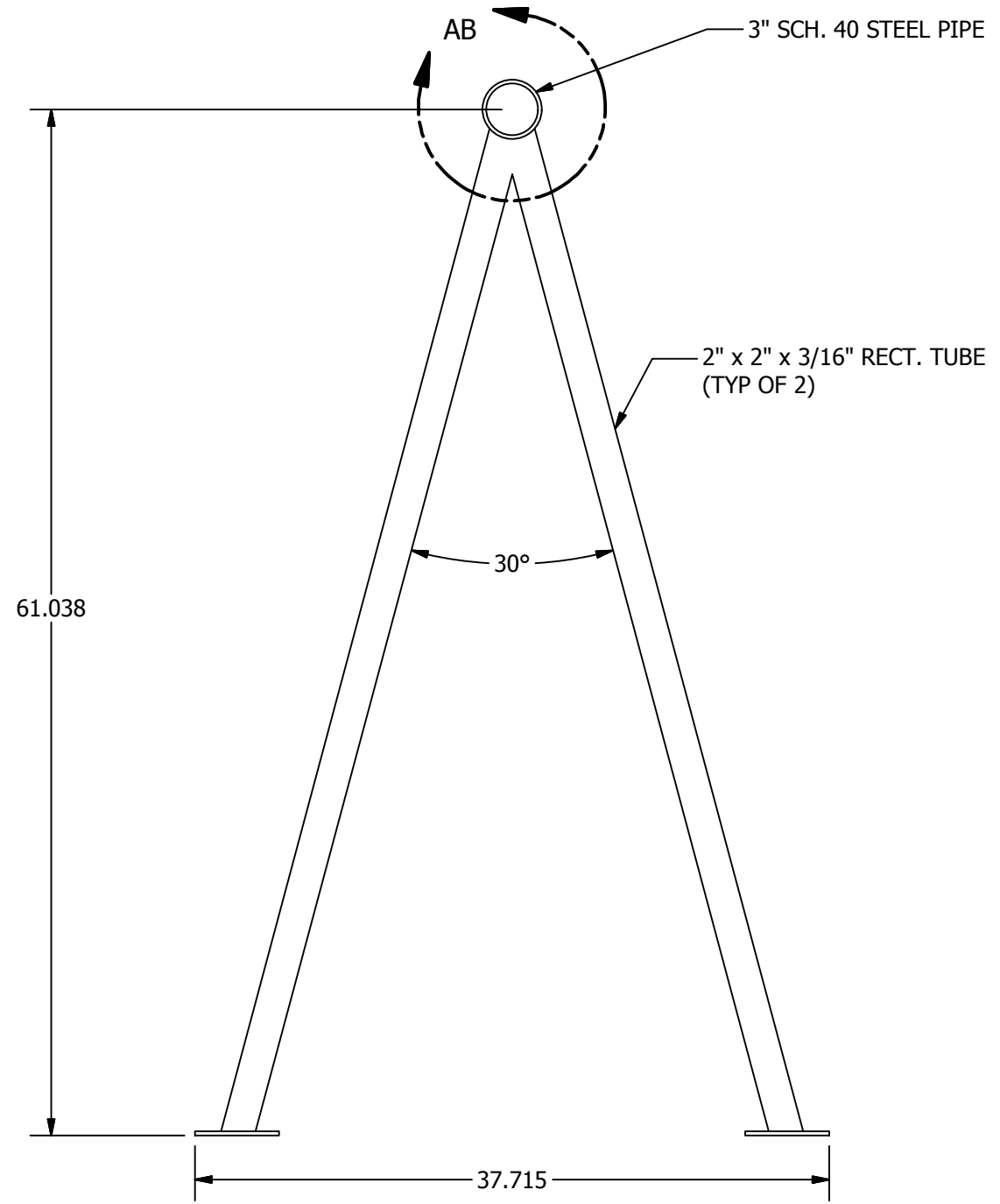
DRAWING #7 - UPPER SUPPORT ARM



SECTION AC-AC
SCALE 1:2



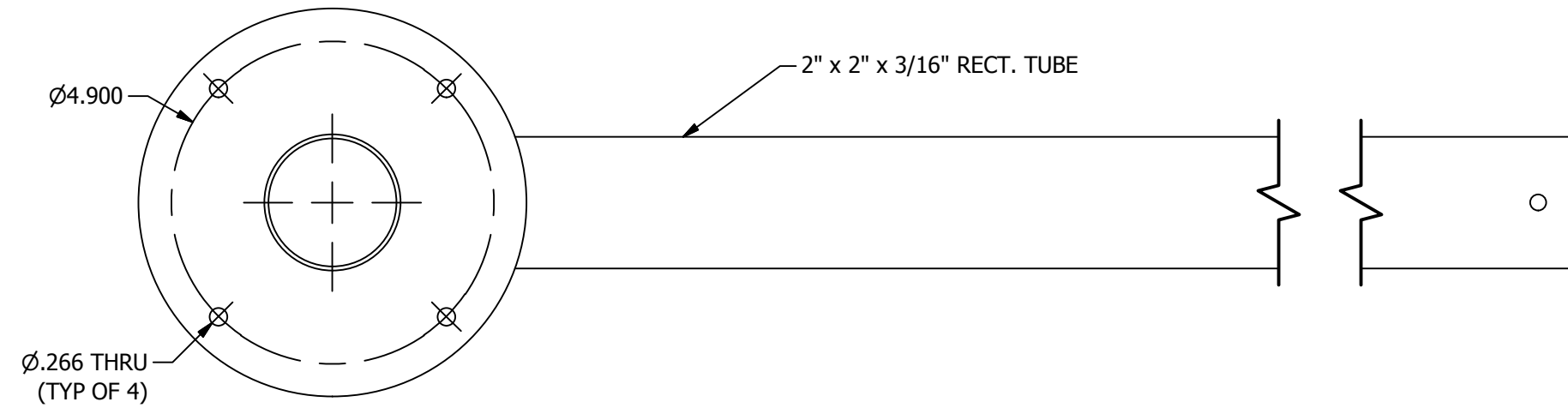
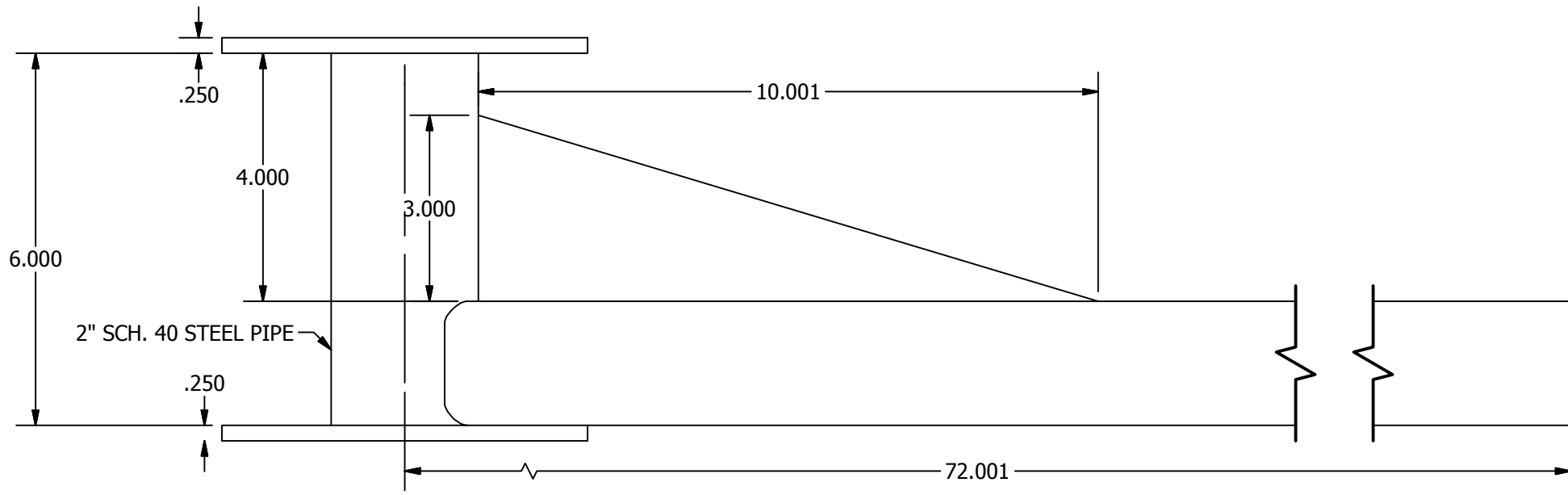
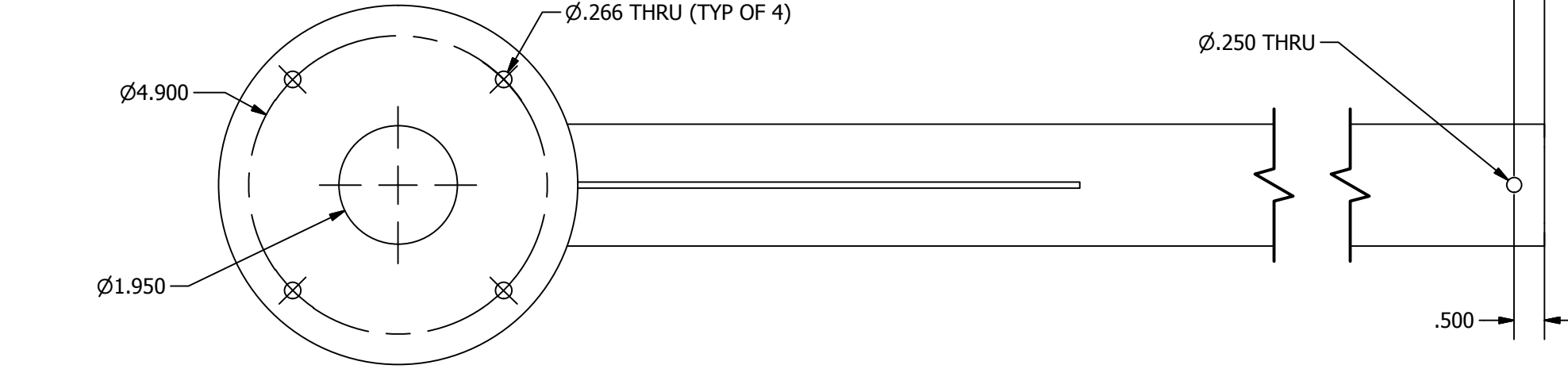
DETAIL AB
SCALE 1 / 2



PRODUCED BY AN AUTODESK EDUCATIONAL PRODUCT

PRODUCED BY AN AUTODESK EDUCATIONAL PRODUCT

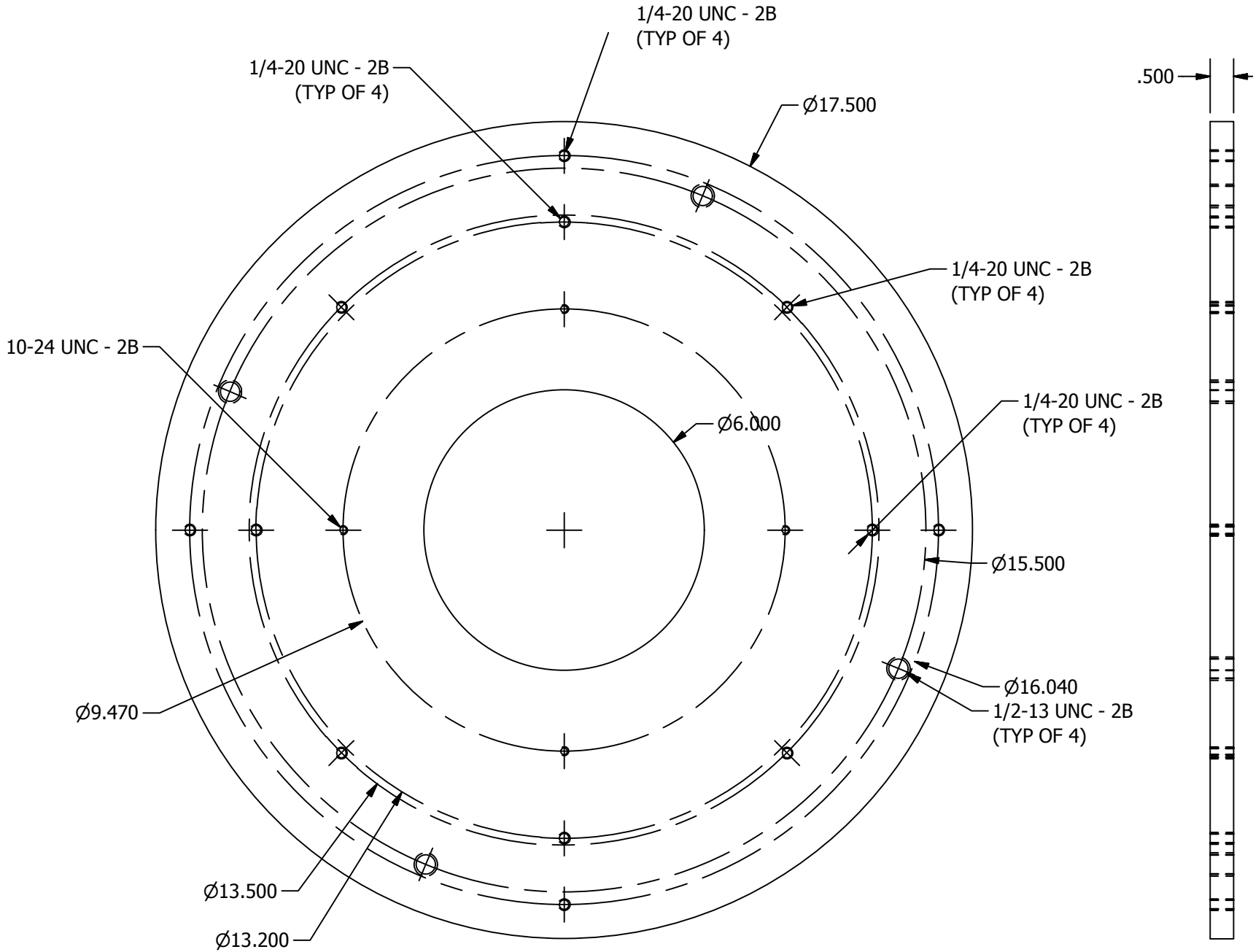
DRAWING #8 - FLYING PENDULUM ARM



PRODUCED BY AN AUTODESK EDUCATIONAL PRODUCT

PRODUCED BY AN AUTODESK EDUCATIONAL PRODUCT

DRAWING #9 - WEAR PLATE

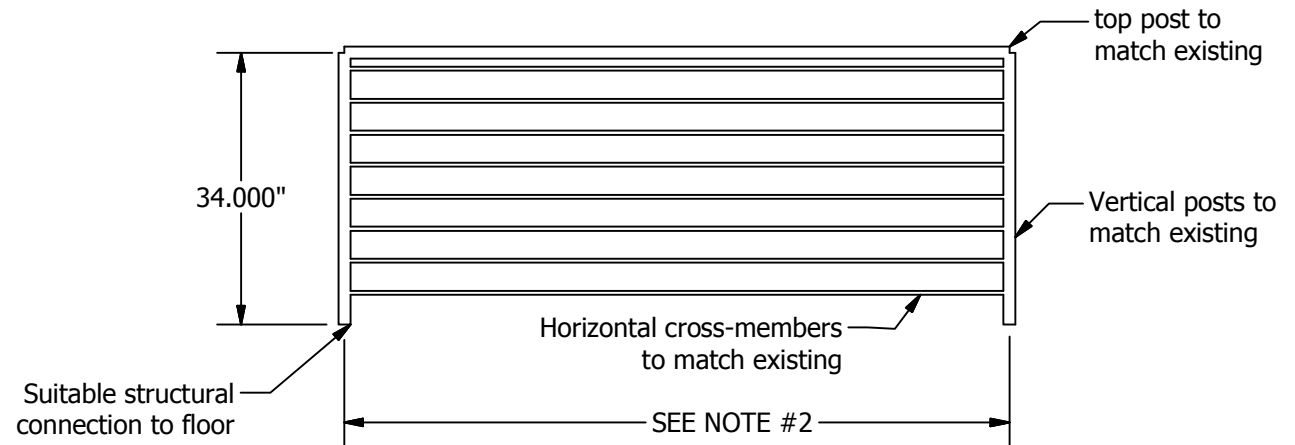


PRODUCED BY AN AUTODESK EDUCATIONAL PRODUCT

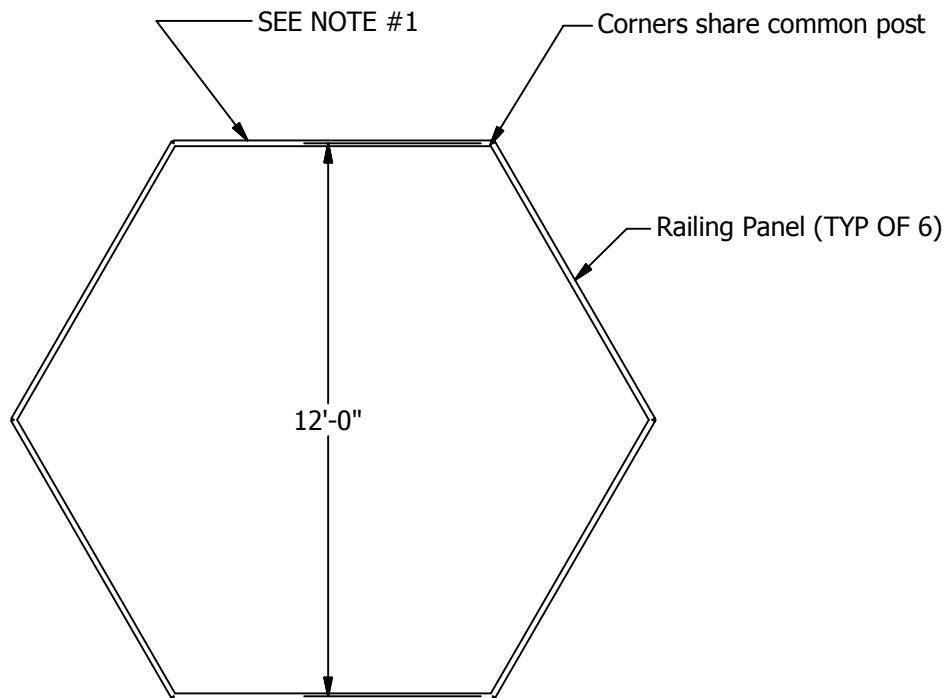
PRODUCED BY AN AUTODESK EDUCATIONAL PRODUCT

DRAWING #10 - RAILING ASSEMBLY

Railing Panel (TYP.)



Railing Assembly - Top View



Notes

#1 Provide access gate in north side railing to meet following specifications.

- Lockable
- 36" min. clear
- 90° min. swing
- Swings outward
- To match existing railing

#2 Approximately 83". Determine exact size to achieve 12' center-to-center dimension as shown in assembly detail.